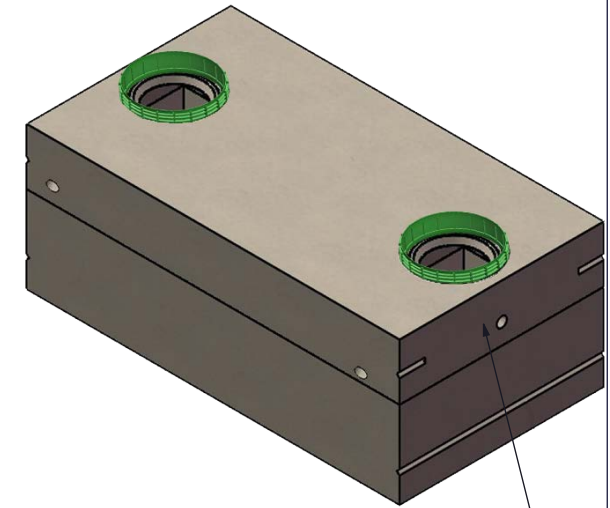
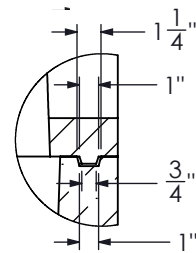
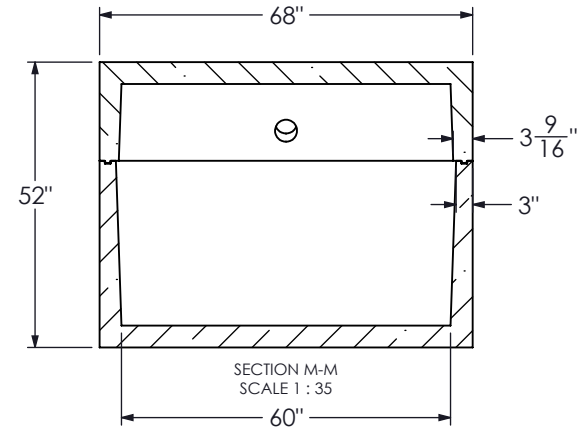
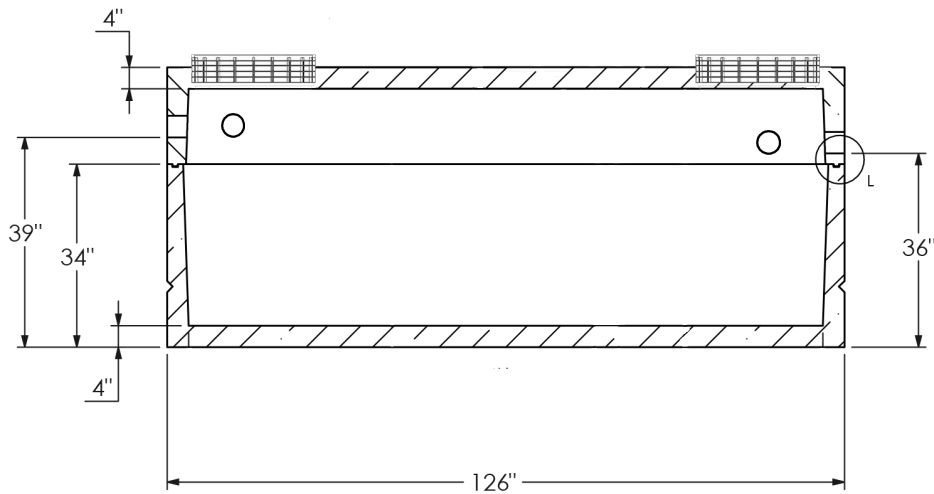


APPROX. CAPACITY: 1,000 GAL.



4" TUF-TITE SEALS



DETAIL L
SCALE 1 : 10

USI
UNDERGROUND SUPPLY INC.
82 STATE RD. WHATELY, MA 01093
413-397-3412
UNDERGROUNDSUPPLYINC.COM

MOLD & DRAWING PRODUCED & ENGINEERED BY:
NORWALK PRECAST MOLDS INC.
P.O. Box 293 Norwalk, OH 44857
(419) 668-1639 | (800) 251-8409
sales@norwalkprecastmolds.com
www.norwalkprecastmolds.com

THIS DRAWING IS THE PROPERTY OF NORWALK PRECAST MOLDS AND MAY NOT BE COPIED OR REPRODUCED IN WHOLE OR IN PART WITHOUT WRITTEN PERMISSION FROM NORWALK PRECAST MOLDS.

CASTING WEIGHTS - TOP - APPROX. 3,000# EA. - BOTTOM - APPROX. 7,000# EA. - TOTAL - 10,000# EA.		REV. DATE	REVISION: B
		7/13/23	ADDED 1000 GAL CONFIGURATION
DRAWN BY	DATE		
CWB	11/14/22		
DESCRIPTION:	DRAWING NUMBER:		
1,000 GALLON LOW PROFILE TANK	ST1000LB		

1,000 GAL. LOW BOY PUMP CHAMBER