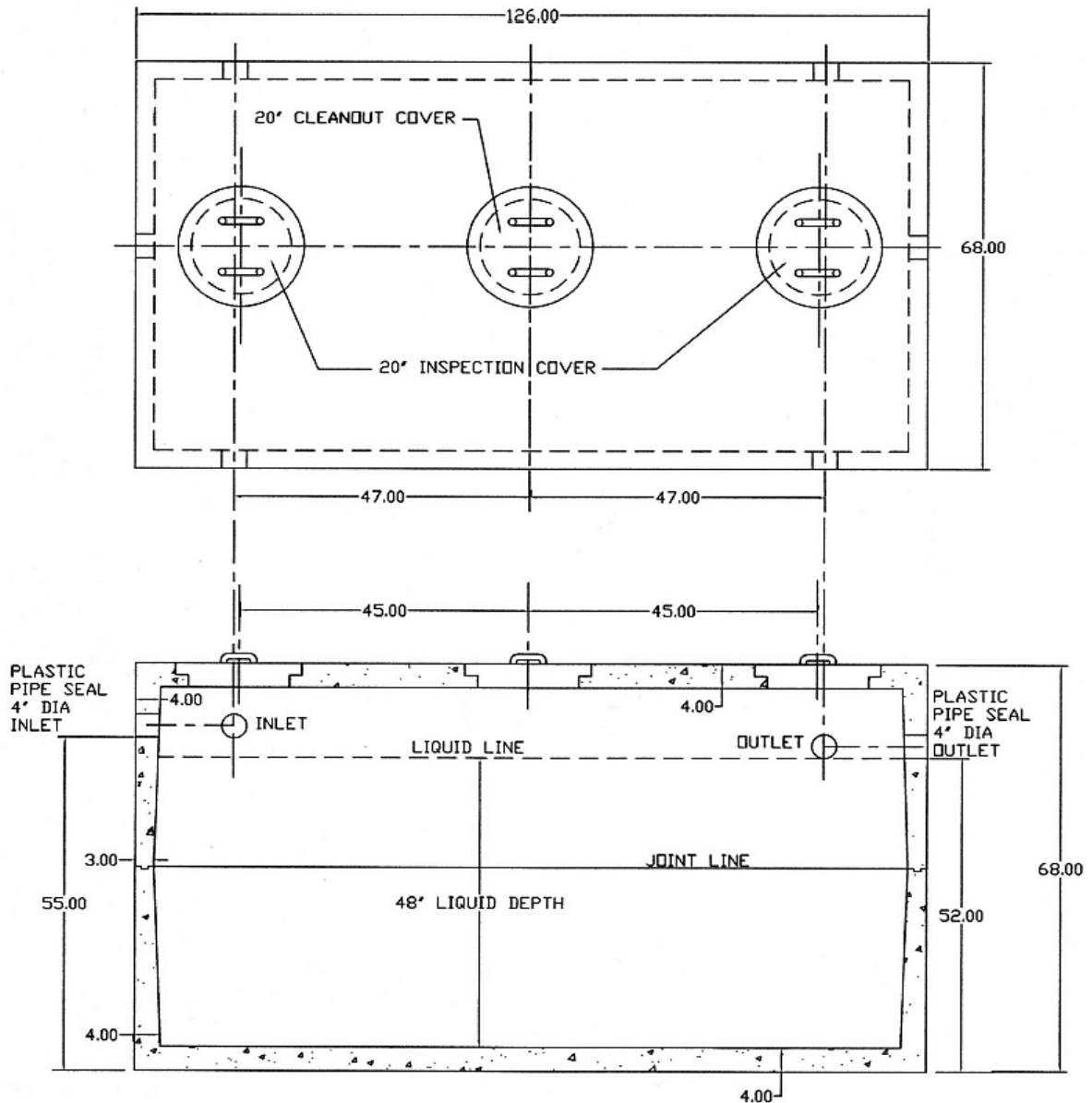


**1,500 Gallon Mid-Seam
Single Compartment Tank
Item #: ST-1500**



NOTES:

- CONCRETE: 4,000 PSI MINIMUM AFTER 28 DAYS
- REINFORCED STEEL CONFORMS TO LATEST ASTM SPECIFICATIONS
- 20" MANHOLES ACCEPT USI 20" X 12" RISER & TUFF-TITE 20" RISERS
- TANK WEIGHT = 12,600 LBS TOTAL
- TEES & BAFFLE SOLD SEPARATELY
- TONGUE & GROOVE JOINT SEALED WITH BUTYL RESIN