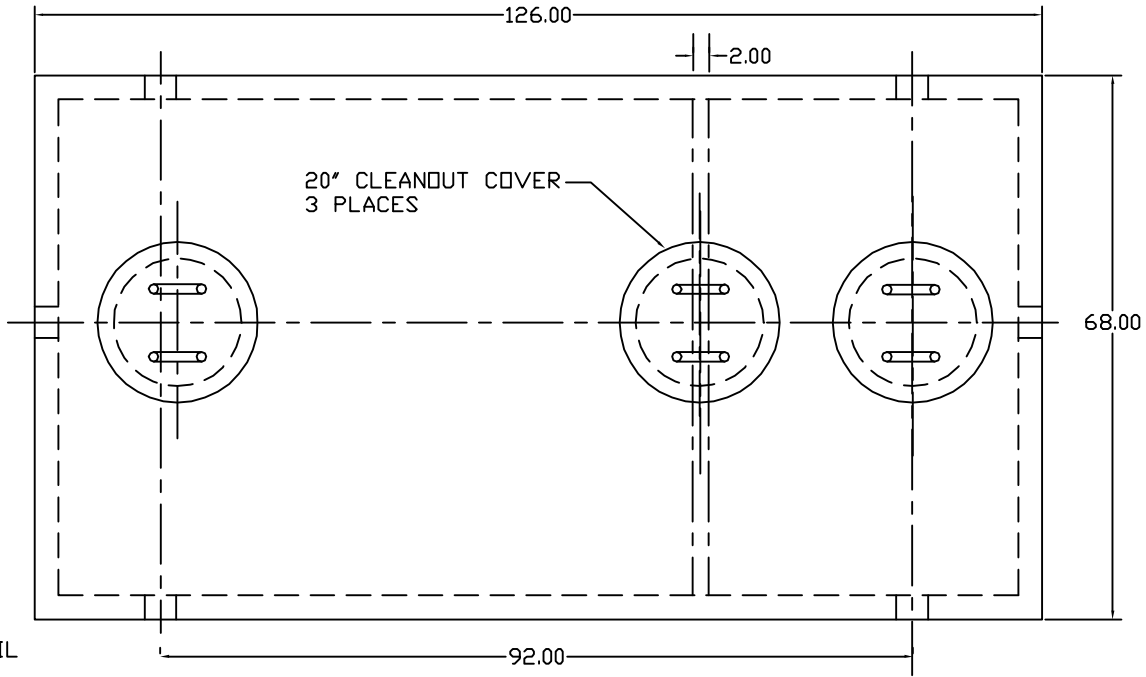
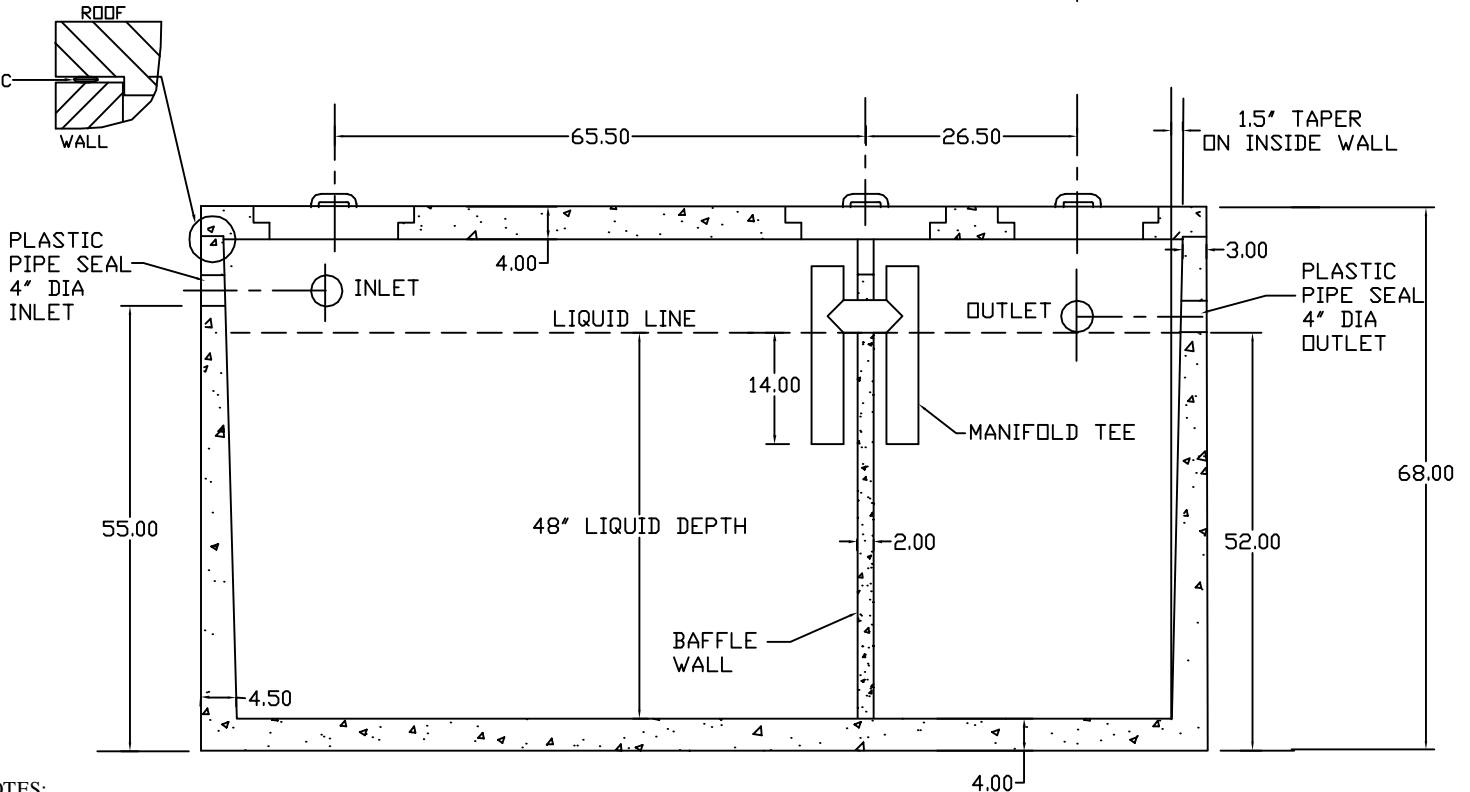
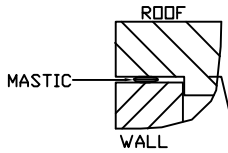


1500 Gallon Monolithic Double Compartment Tank Item# ST-1500-2CM



ENLARGED DETAIL



NOTES:

- CONCRETE: 4,000 PSI MINIMUM AFTER 28 DAYS
- REINFORCED STEEL CONFORMS TO LATEST ASTM SPECIFICATION
- 20" MANHOLES ACCEPT U.S.I. 20" x 12" RISER AND TUFF-TITE 20" RISERS
- TANK WEIGHT = 12,930 LBS TOTAL
- TEES AND BAFFLE SOLD SEPARATELY
- TONGUE & GROOVE JOINT SEALED WITH BUYTL RESIN