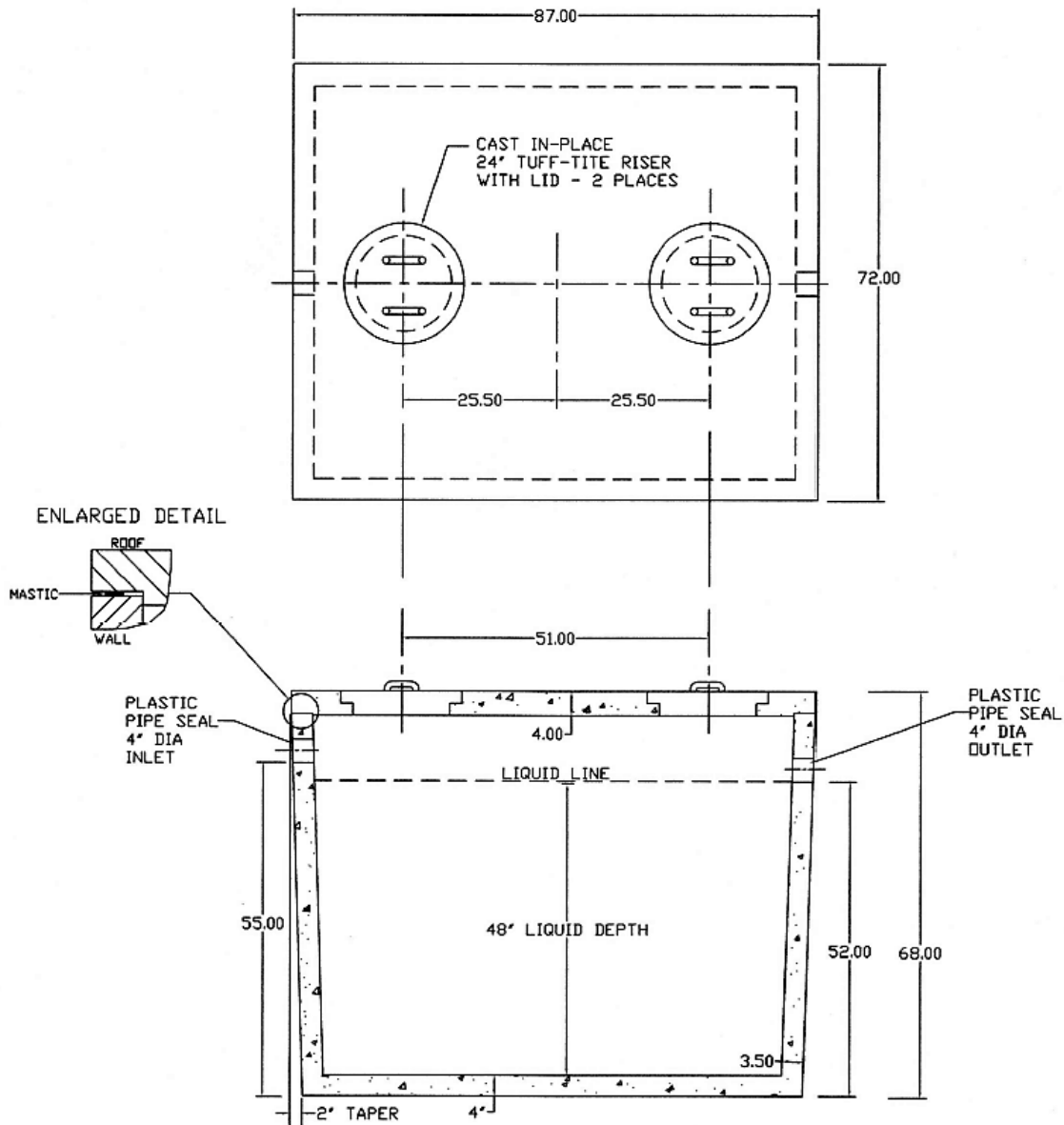


**1,000 Gallon Monolithic  
Pump Chamber/Septic Tank  
Item #: ST-1000-M**



**NOTES:**

- CONCRETE: 4,000 PSI MINIMUM AFTER 28 DAYS
- REINFORCED STEEL CONFORMS TO LATEST ASTM SPECIFICATIONS
- 20" MANHOLES ACCEPT USI 20" X 12" RISER & TUFF-TITE 20" RISERS
- TANK WEIGHT = 8,765 LBS TOTAL
- TEES & BAFFLE SOLD SEPARATELY
- TONGUE & GROOVE JOINT SEALED WITH BUTYL RESIN