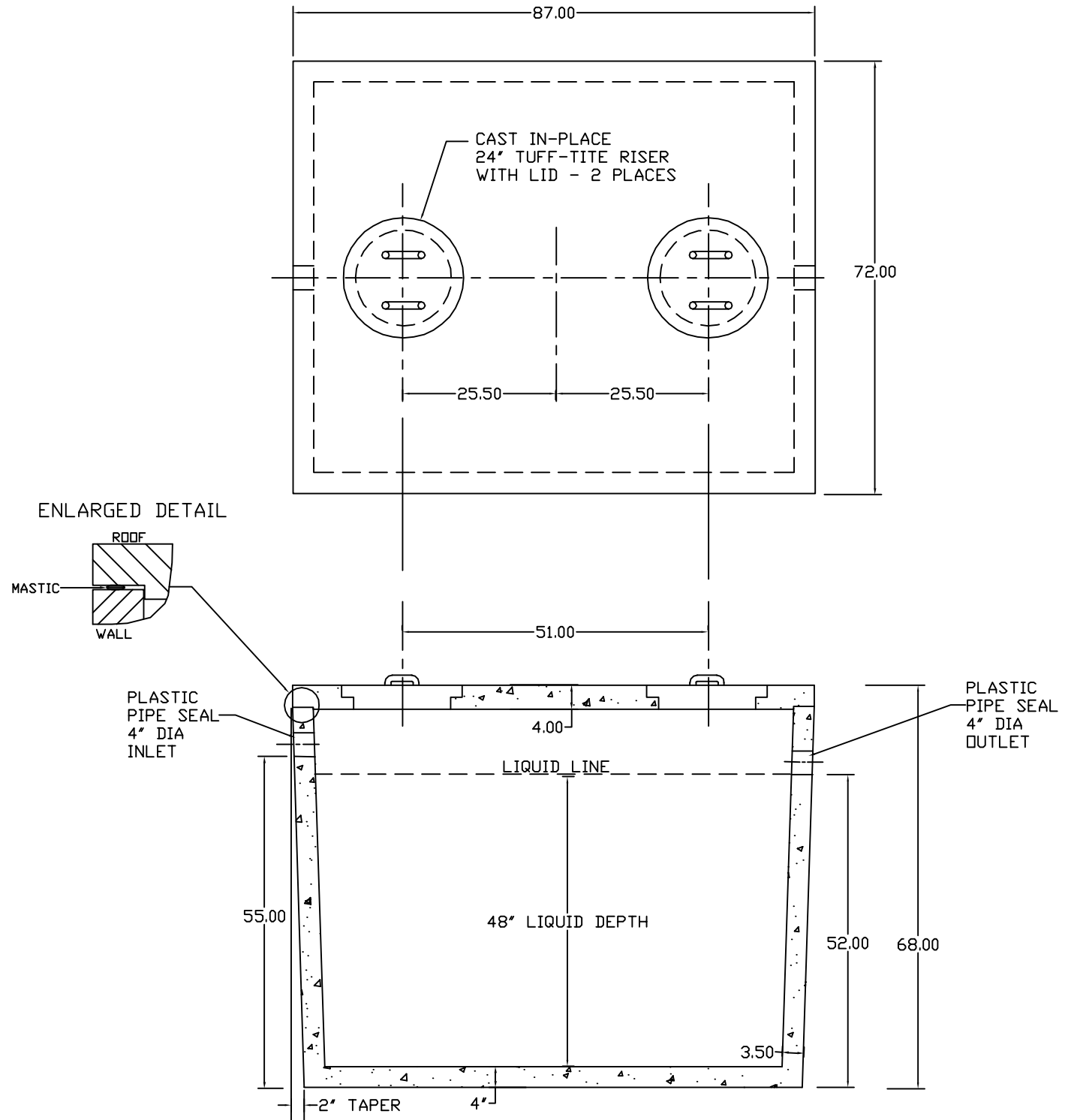


1000 Gallon Monolithic  
Pump Chamber/Septic Tank  
Item# ST-1000-M



- NOTES:
- CONCRETE: 4,000 PSI MINIMUM AFTER 28 DAYS
  - REINFORCED STEEL CONFORMS TO LATEST ASTM SPECIFICATION
  - 20" MANHOLES ACCEPT U.S.I. 20" x 12" RISER AND TUFF-TITE 20" RISERS
  - TANK WEIGHT = 8,765 LBS TOTAL
  - TEES AND BAFFLE SOLD SEPARATELY
  - TONGUE & GROOVE JOINT SEALED WITH BUYTL RESIN