

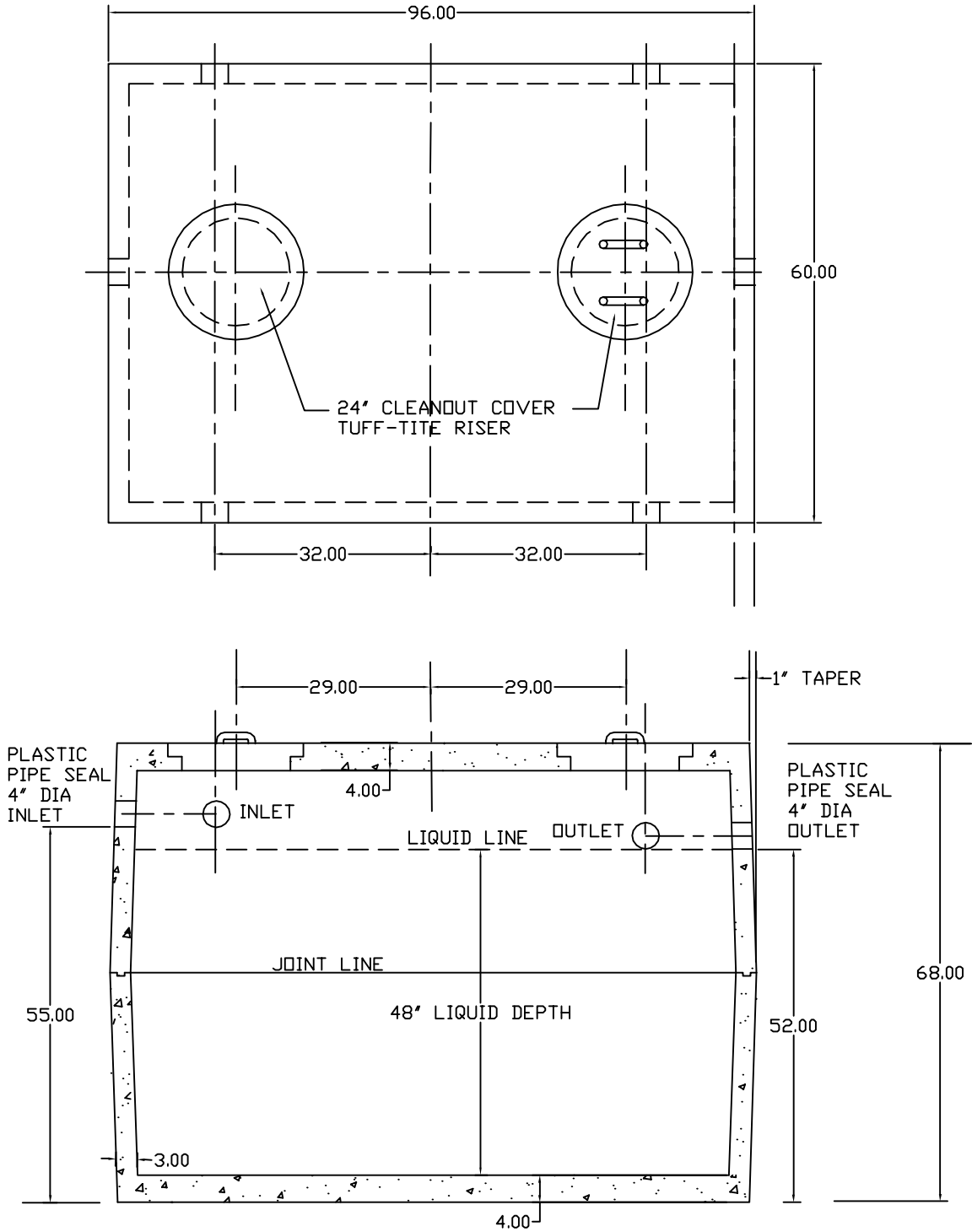
Underground
Supply
Incorporated



Precast
Concrete
Products

Underground Supply Inc.
574 Haydenville Road
Leeds, MA 01053
Phone: 413-584-5255
Toll Free: 800-350-5055
Fax: 413-584-9763
www.undergroundsupplyinc.com

1000 Gallon Mid-Seam Pump Chamber/Septic Tank Item# ST-1000



- NOTES:
- CONCRETE: 4,000 PSI MINIMUM AFTER 28 DAYS
 - REINFORCED STEEL CONFORMS TO LATEST ASTM SPECIFICATION
 - TANK WEIGHT = 8,765 LBS TOTAL
 - TEES AND BAFFLE SOLD SEPARATELY
 - TONGUE & GROOVE JOINT SEALED WITH BUYTL RESIN